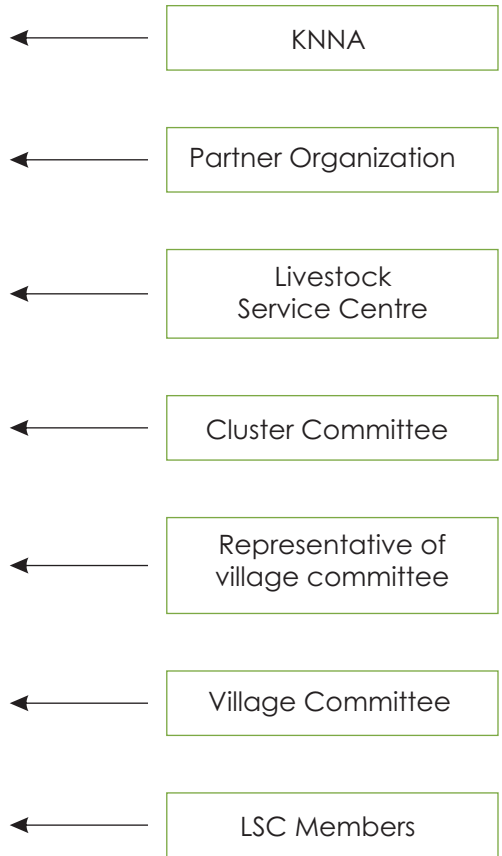
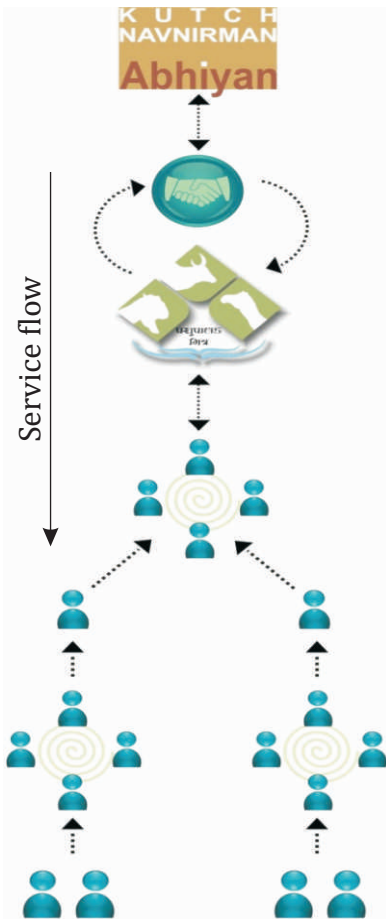




Livestock Rearers'
Producer Company,
Kutch, Gujarat

Enterprise Name	Livestock Service Centre
Institutional Structure	Producers' Company
Geographic Area	113 Villages in 6 clusters of Kutch district
Year of Formation	2011
Commodities	Cattle Feed, Animal Health and Agriculture
Current Membership	3686
Promoting Partners	Samjhyali Setu, Ujas Mahila Sanghthan, Vivekananda Research and Training Institute, Saiyare Jo Sanghthan, KFFFDI
Per Member Income	Rs. 17,288
Turnover in 2012	Rs. 291.47 lakhs





Registration day of Producer Company



First Annual Meeting of Producer Company



Directors' Board Meeting of Producer Company



Meeting of Producer Company with NDDDB



Meeting of Producer Company with FWWB



First Annual Meeting of Producer Company

